

## INQUIRY FORM BEAM ROUND GUIDE - FULL/HOLLOW

ATTENTION : Progressive grip safety gear compulsory for hollow guides and speed > 0,63 m/s \*

### GENERAL INFORMATION AND INSTALLATION

COMPANY:		N° AR :		N° DEVICE :	
CUSTOMER:	TYPE OF DEVICE :	DATE :		QUOTATION	SALE
Duty load (Q)	kg	Rated lift speed	m/s (max. 1.00 m/s*)		
Total dead weight (P)	kg	Tripping speed	m/s (max. 1.30 m/s)		
Including : car, car frame, door, interior, equipment. ATTENTION : the addition of a beam changes the total dead weight. Contact us for info. The dead weight is used for setting the car safety gear.					
Type of safety gear		Instant      Progressive 1 way      Progressive 2 ways			
Guides		FULL      HOLLOW th			
∅ guides	mm	Thickness min. of hollow guide = 5mm			
Levels	Machine room localisation				

### RECORD ON PIT

Min. shaft width	LG	mm
Min. shaft depth	PG	mm
Pit height	C	mm
Axis guide / smooth wall	GP	mm
Guide nose / left wall	A	mm
Guide nose / right wall	B	mm
Platform thickness	PLT	mm
Existing beam height	TRA	mm
Existing beam internal width	IT	mm
Existing beam external width	ET	mm
Existing DBG (bottom)		mm
Internal car dimensions	LCI x PC	x mm

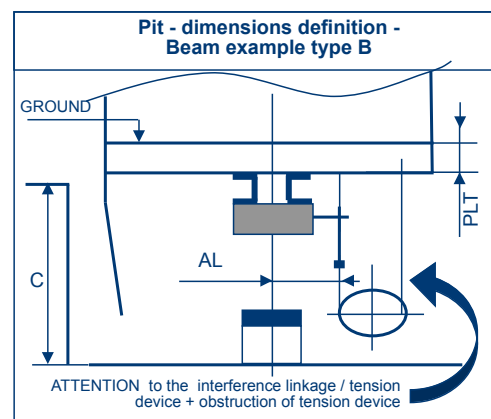
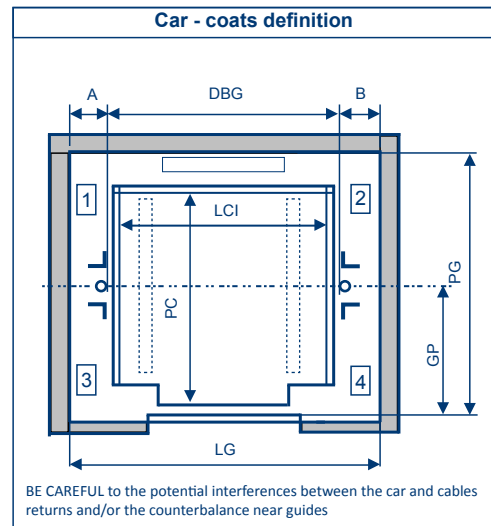
Obstruction of guides anchorages

ATT=      mm

Type of existing beam

Type A      Type B      Type C      Type D      Others (contact us)

All our beams are supplied with a corresponding adjustment to the selected type. For all other types of existing beam (SACEM, etc.) or its replacement, we need a detailed record.



### RECORD LAST LEVEL

Governor rope / axis of guides	AL up	mm	AL down	mm
Existing DBG (top)		mm		
Governor definition				
1	2	3	4	∅ 200/300 :
Machinery room	Shaft	Pulley local		mm
				Left
				Right

### RECORD GOING DOWN

Vertical distance between clips of guides      mm

DBG all levels

Level	DBG	Level	DBG	Level	DBG

If the plumb of the guides is wrong to ± 2mm, the realignment of guides is necessary

