

MRL MODERNISATION INQUIRY FORM

GENERAL INFORMATIONS

Company:	Customer contact:	Tel. :
Oder Quote		N° installation:
Customer reference:		Inquiry date:

TECHNICAL INFORMATIONS

INSTALLATION						
Simplex	Duplex	1 landing	2 call(s)	Duty load	kg	Upward Overspeed protection
Controller				Car weight	kg	High traffic
Brand	Model	Year		Rated speed	m/s	Fireman management (Pubic building)
System voltage	Tri 400 VCA, 50 Hz	Other	V	Limit switch position	In shaft On car roof	Fireman level
Controller	Down collective	Main Full collective	Full collective		Automatic push button	

MACHINE						
Preserved	Replaced					
Machine	Asynchronous VF	Synchronous	2 speeds	Brake voltage	VCC	Brake contacts
	Brand	Model		Brake on traction shaft	Without 205 VCC Other V	
Motor voltage	Tri 400 VCA	Other	V	Encoder	NDAT Incremental Other	
Motor nominal current		A	tr/min	Forced ventilation (230 VCA)		
Motor nominal power		kW		COPTER Selection	with upward overspeed without upward overspeed	
Flywheel with high inertia						

DOOR																												
Preserved	Replaced																											
Car door operators			Landing doors																									
<table border="1"> <thead> <tr> <th>Face 1</th> <th>Face 2</th> </tr> </thead> <tbody> <tr> <td>Manual</td> <td>Manual</td> </tr> <tr> <td>Tri 400 VCA, 50 Hz</td> <td>Tri 400 VCA, 50 Hz</td> </tr> <tr> <td>Injection</td> <td>Injection</td> </tr> <tr> <td>Closing order</td> <td>Closing order</td> </tr> <tr> <td>Door opening or closing order</td> <td>Door opening or closing order</td> </tr> <tr> <td>Other</td> <td>Other</td> </tr> <tr> <td>Brand</td> <td>Brand</td> </tr> <tr> <td>Door operator type</td> <td>Door operator type</td> </tr> </tbody> </table>			Face 1	Face 2	Manual	Manual	Tri 400 VCA, 50 Hz	Tri 400 VCA, 50 Hz	Injection	Injection	Closing order	Closing order	Door opening or closing order	Door opening or closing order	Other	Other	Brand	Brand	Door operator type	Door operator type	<table border="1"> <thead> <tr> <th>Automatic</th> <th>Manual</th> </tr> </thead> <tbody> <tr> <td>Brand</td> <td>Model</td> </tr> </tbody> </table>				Automatic	Manual	Brand	Model
Face 1	Face 2																											
Manual	Manual																											
Tri 400 VCA, 50 Hz	Tri 400 VCA, 50 Hz																											
Injection	Injection																											
Closing order	Closing order																											
Door opening or closing order	Door opening or closing order																											
Other	Other																											
Brand	Brand																											
Door operator type	Door operator type																											
Automatic	Manual																											
Brand	Model																											
			Number of retiring cams																									
			0 1 2 Voltage V																									
			Brand Model																									
			EN 81-21 Locks reset coil voltage																									
			24 VCC (SLCMA) 230 VCA (FERMATOR)																									
			Without reset by coil																									

OPERATING PANEL							
COP			LOP			Display	
Preserved	Replaced		Preserved	Replaced		Preserved	Replaced
Connectic	Screw	JST	Connectic	Screw	BUS	LCD	TFT
Emergency phone			Presence light			Quantity	
Amphitech	Memco		Out of order light	Yes	No		
2 N	Anep		Integrated LCD display	Yes	No		
Other			Quantity				
Fireman dialer	No	Yes					
Independant service	No	Yes					
Key contact	No	Yes	Key contact use:				

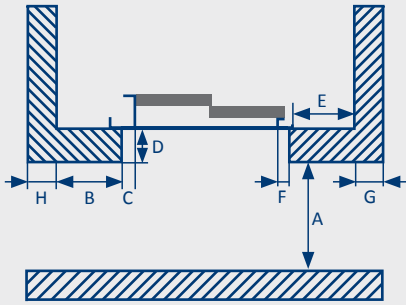
MRL MODERNISATION INQUIRY FORM

CONTROLLER

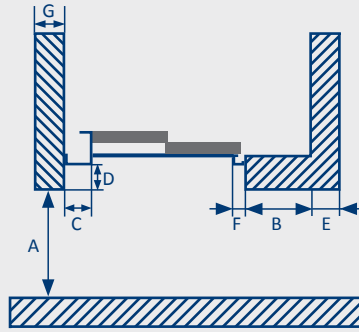
Select your door type. Draw the controller position.

Landing view

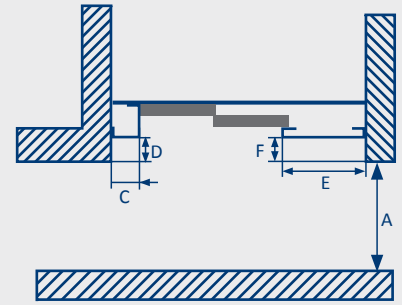
IN SHAFT



SEMI SHAFT



FULL FRONT



CAR DOORS

Opening direction (landing view)

- Left
- Right
- Central

LANDING

Dimensions A mm B* mm C mm * to fill if B < 500 mm
D mm E mm F mm G mm

CONTROLLER BOX

Internal dimensions (H x L x D) H x L x D mm

Component position

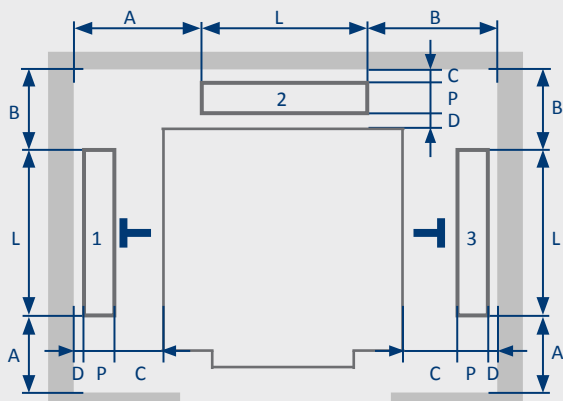
Component	Location	Access
Main Board	Landing	Shaft
Transformer	Landing	Shaft
Battery	Landing	Shaft
Contactors	Landing	Shaft
VVVF / Inverter	Landing	Shaft
Power supply unit	Landing	Shaft
Rescue Device	Electric	Manual

Controller options

- Non-serving affected levels management (U36) (mandatory ERP)
- EN 81-21 (unlocking)
- Unlocking zone indicator
- Ignition landing on arrival
- Thermostat

MACHINE AND/OR INVERTER POSITION

Last level shaft view



MACHINE

Position	1	2	3	
Dimensions (H x L x D)	H	x L	x D	mm
Distances	A	mm	B	mm
	C	mm	D	mm
Height from the ceiling of the shaft				mm

INVERTER IN SHAFT

Position	1	2	3	
Dimensions (H x L x D)	H	x L	x D	mm
Distances	A	mm	B	mm
	C	mm	D	mm
Height from the ceiling of the shaft				mm

MRL MODERNISATION INQUIRY FORM

SHAFT CONFIGURATION

NAME OF LEVELS	INTERVAL BETWEEN LEVELS	SERVICE FACES	MAIN LEVEL	MRL CONTROLLER POSITION	LANDING DISPLAYS
Last Level Height	m	1	2		
20	H= m				
19	H= m				
18	H= m				
17	H= m				
16	H= m				
15	H= m				
14	H= m				
13	H= m				
12	H= m				
11	H= m				
10	H= m				
9	H= m				
8	H= m				
7	H= m				
6	H= m				
5	H= m				
4	H= m				
3	H= m				
2	H= m				
1					
Pit	m				

SHAFT OPTIONS

Jobsite manoeuvre unit	Shaft lighting
Pit units (Stop, Lighting, Socket)	EN 81-20 Pit Inspection unit

CAR OPTIONS

Retractable toe-guards	Overload weighting
Light curtains	Car frame
	Rope
	Fixed pitch

SAFETY SYSTEMS DESCRIPTION

OVERSPEED UP

The lift is equipped with:
 a bi directional overspeed governor
 a shaft brake or a CE Gearless
 a safety gear counterweight
 a rope brake

Specify brand and type
 Another specific system to describe:

UCM (FORMER A3 AMENDEMENT) (PROTECTION AGAINST UNCONTROLLED OPEN DOOR MOVEMENTS)

The lift is not equipped with a UCM management device

The lift is equipped with:
 a detection system activating a bi-directional safety gear
 a detection system activating a shaft brake or a CE Gearless

Specify brand and type
 Another specific system to describe:

REDUCED RESERVES EN 81-21

The lift does not have a device in accordance with EN 81-21 for reduced reserves

The lift is equipped with:
 - For the lower reserve
 Pit stops
 Manual
 Automatic
 Safety gear engagement system
 Engaging the overspeed governor
 Engaging another device

- For the upper reserve
 Stop under the counterweight
 Manual
 Automatic
 Stop on the car roof
 Manual
 Automatic
 Safety gear engagement system
 Engaging the overspeed governor
 Engaging another device

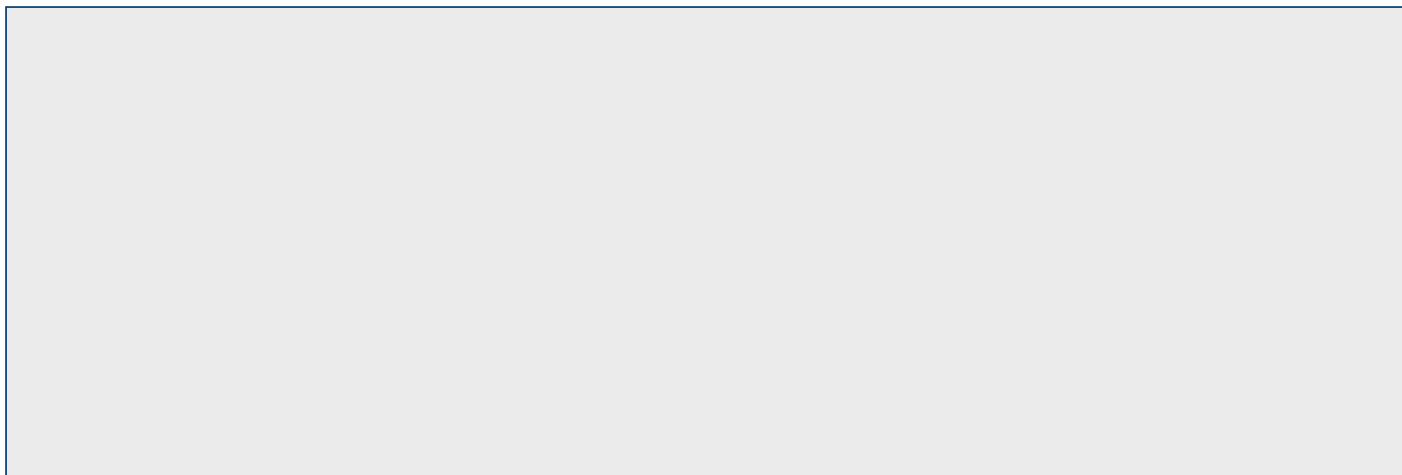
MAINTENANCE AT THE TOP OF SHAFT

The lift is equipped with a contact lock on car to hold in position shaft top.

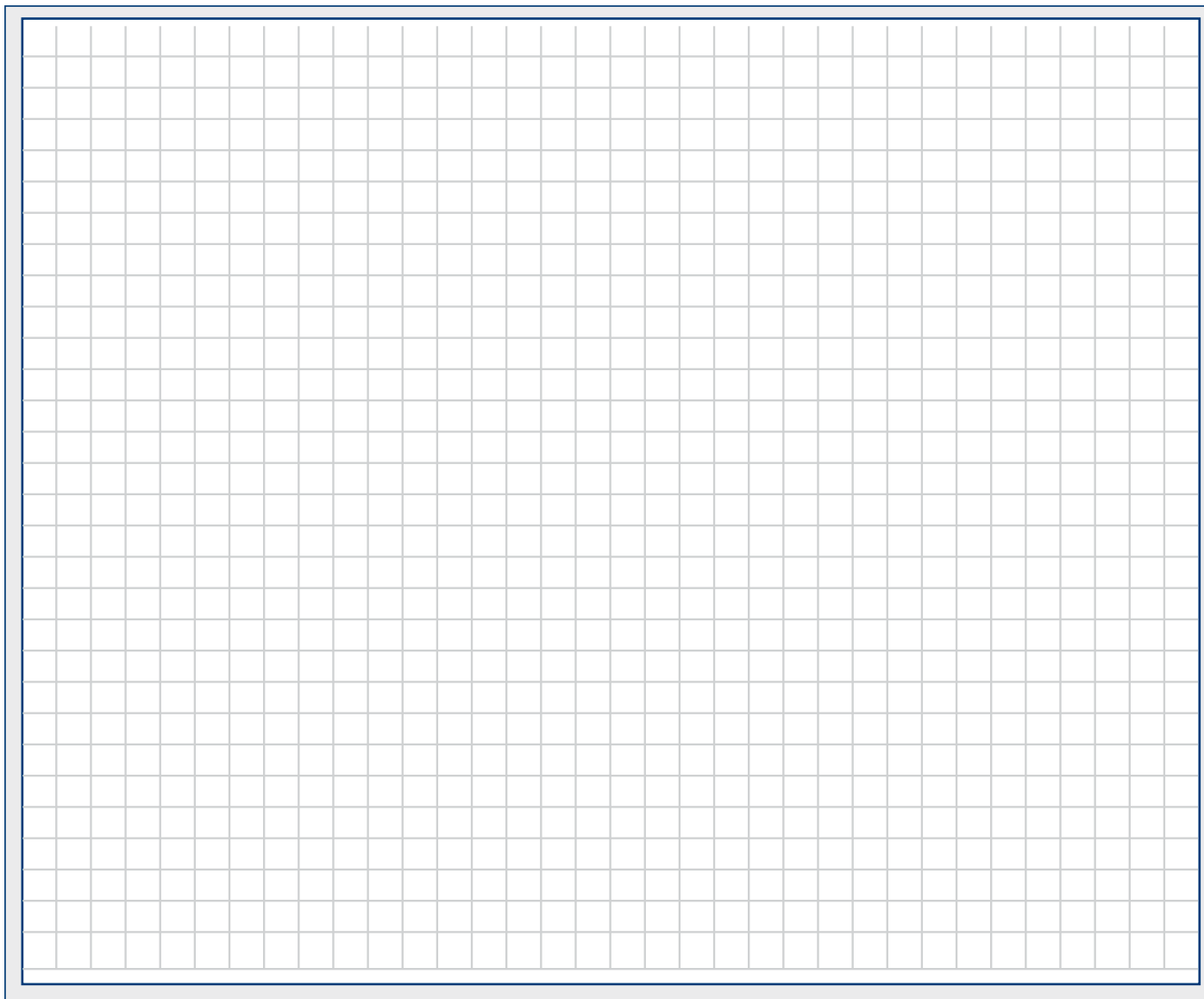
MRL MODERNISATION INQUIRY FORM

ADDITIONAL INFORMATIONS

Provide if possible interior controller pictures or drawing

A large, empty rectangular box with a thin blue border, intended for providing interior controller pictures or drawings.

TECHNICAL DRAWING - IMPLANTATION

A large rectangular area filled with a light gray grid, intended for technical drawing or implantation details. The grid consists of small squares.